



## OFFERED FOR IMMEDIATE SALE

### Rolls-Royce Industrial Olympus Gas Generator

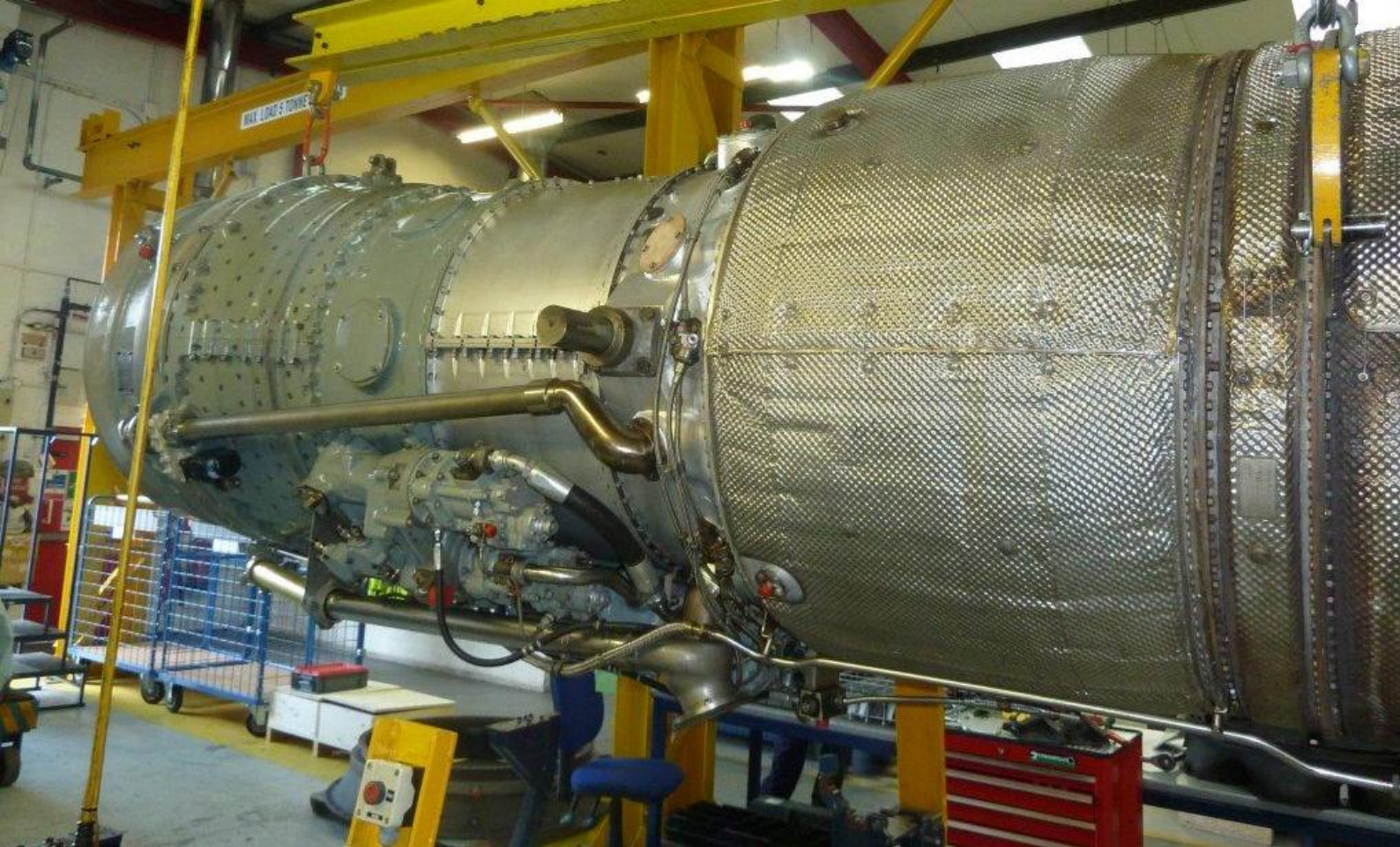
#### Engine Serial Number 202049

The Rolls-Royce industrial aero-derivative Olympus gas generator entered service for land-based power generation applications in 1962. By the 1990s more than 320 generating sets powered by the industrial Olympus were sold to more than 20 countries. Many of these units remain in service today, providing dispatchable power for the global energy industry.

Engine serial number 202049 was built in 1977, entering service with a leading UK power generation company, providing 'black-start' capability for their Power Station in Kent. The gas generator was later relocated for similar duties elsewhere, receiving comprehensive maintenance support from RWG throughout its service life. Rationalisation of generating assets presented RWG with an opportunity to acquire this engine in 2011, having completed just 1,690 operating hours since new.

#### Equipment Technical Specification

Equipment	Rolls-Royce Industrial Olympus Gas Generator	
Engine Serial Number	Mk: 2020 (B Rated 17.5MW)	ESN: 202049
Time/Starts Since New	TSN = 1,690hrs	SSN = 1,410
Cyclic Life Remaining	HP System = 952	LP System = 3,787
Configuration	Exhaust	Parallel
	Combustion Chambers	Phase II OLG 214
	Fuel Nozzles	Liquid (Mod 3490)
Engine Mounted Accessories	Starter Gearbox	
	Lube & Scavenge Pumps	
	Accessory Gearbox	
	LP & HP Fuel Pumps, Distributor and Fuel Rail	
	Fuel Cooled Oil Cooler	



### Gas Generator Condition

This gas generator is offered in a refurbished condition, complete with a recent integrity and performance test report (September 2020), demonstrating the unit is fully operational and ready for return to service. The gas generator is supplied in a certified transportation stand, inhibited, and sealed within an MPV bag for long-term storage.

### About RWG

RWG (Repair & Overhauls) Limited is a Siemens-Energy and Wood plc Company. RWG is the global market leader for maintenance, repair and overhaul of Siemens Industrial aero-derivative gas generators and power turbines.

In addition, RWG is authorised by Rolls-Royce Naval & Marine to maintain gas turbines used for marine propulsion.

RWG's headquarters in Aberdeen, Scotland and regional service centres in Houston and Kuala Lumpur employ 500 highly skilled and experienced people.

Our service is backed by Siemens-Energy technical and engineering expertise, so with OEM support and 30 years of experience, RWG has established an unrivalled reputation for product quality and service delivery.

### Price on Application

For more detailed information, or to obtain a quotation for supply of this equipment, please contact RWG directly using the contact details below.

### Rely on Our Experience

From repair and overhaul in our state-of-the-art service centre, to worldwide field support in any operating environment, we are here to support your industrial Olympus power generation equipment.

We have a dedicated team of Olympus specialists, whose product knowledge is unrivalled in the industry. With our technical know-how and streamlined workshop processes, we'll help lower the cost of ownership of your equipment.